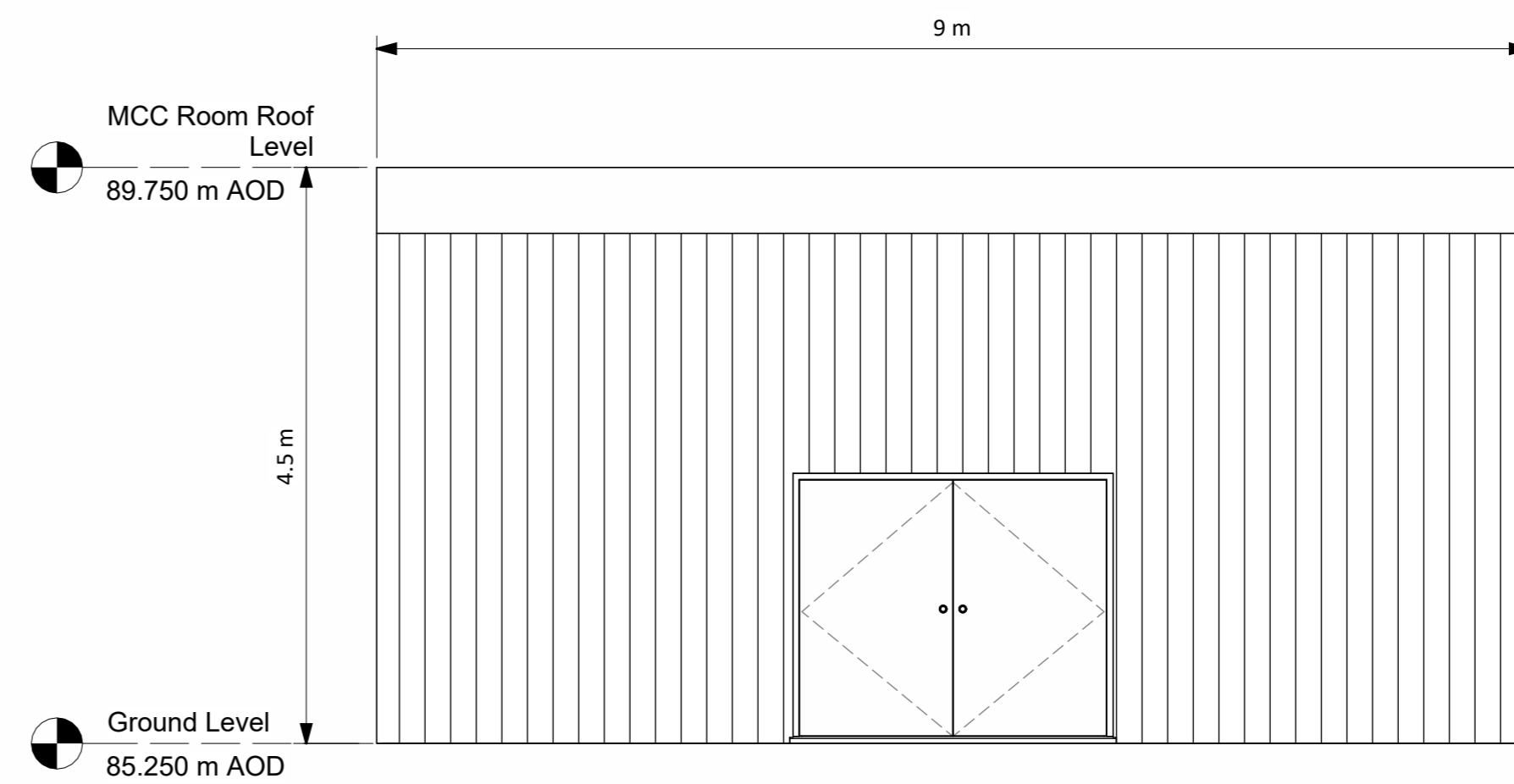
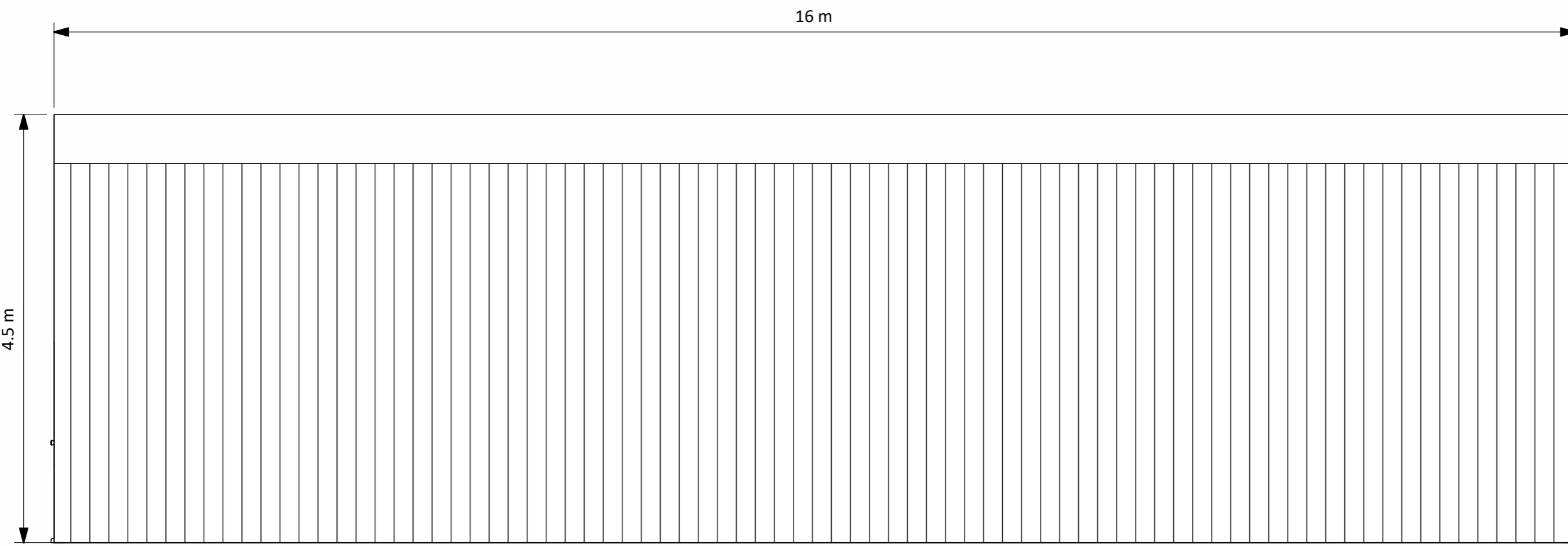
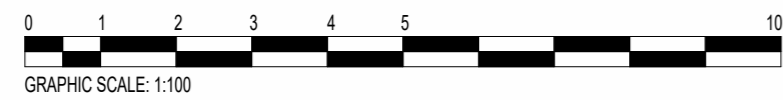


2 ACC - MCC North
1 : 50

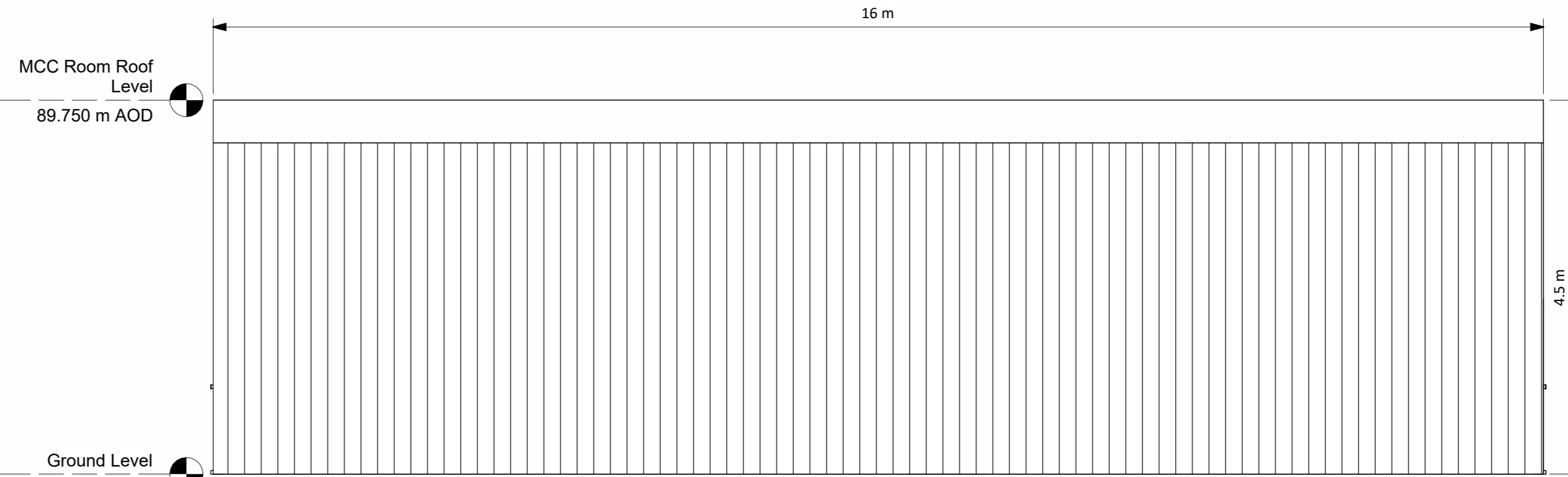


3 ACC - MCC South
1 : 50

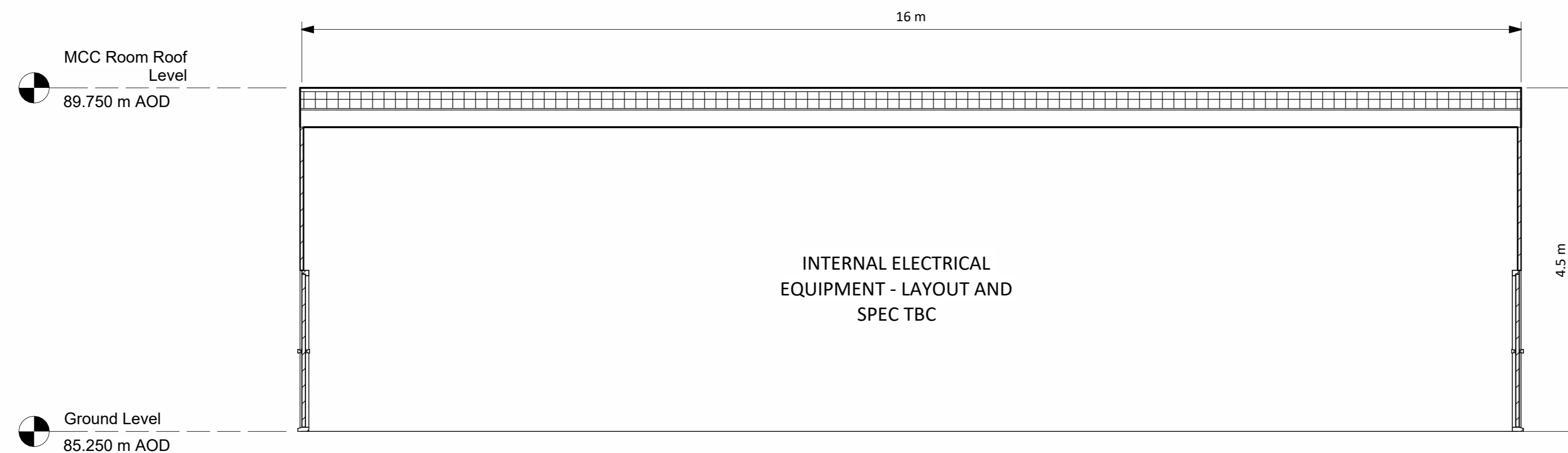
1 ACC - MCC Room Floor Plan 85.250m AOD
1 : 100



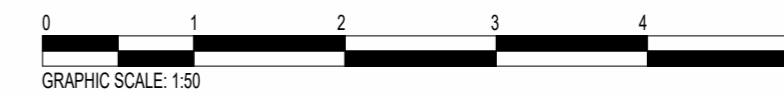
4 ACC - MCC West
1 : 50



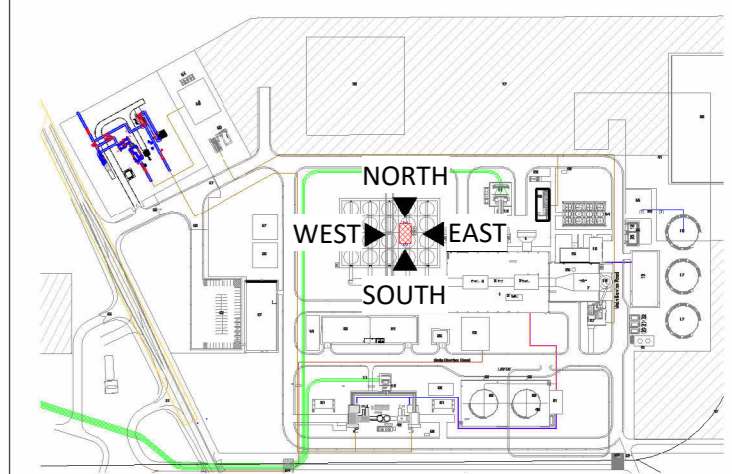
5 ACC - MCC East
1 : 50



6 ACC - MCC Section A-A
1 : 50



NOTES:



Key Plan
1 : 6000

NOTES:

- Building colours will range within a muted mid-dark grey and green spectrum. Refer to EIAR Vol. II, Appendix 10A for detail
- Final detail of building finishes to be agreed with planning authority in advance of development commencing

R1.0	FOR PLANNING	DTW	AO1	BAB	26.01.24
REV.	DETAILS OF REVISION	DRAWN	CHKD	APR	DATE

FICTNER
CONSULTING ENGINEERS LIMITED
7 Sir John Rogerson's Quay, Block C,
Grand Canal Docklands,
Dublin 2, D02 VK60
Tel: +353 (1) 506 0632
Website: www.fichtner.ie

CLIENT: **Bord na Móna Powergen Limited**

SITE:

PROJECT: **Derrygreenagh Power**

TITLE: **AIR COOLED CONDENSER -
MOTOR CONTROL CENTRE BUILDING
PLAN, ELEVATIONS & SECTIONS**

DRAWING STATUS:	For Planning
DRAWN BY:	DTW
CHECKED BY:	AO1
APPROVED BY:	BAB
DATE:	26.01.24

OFFICE OF ISSUE:	DUBLIN
SHEET SIZE:	A1
DRAWING No.:	S7060-8050-0027
SCALE:	AS SHOWN
REVISION:	R1.0